

TPG CoReSuite

The Software Tool for Capacity Planning
and Resource Planning



OPTIMAL OVERVIEW OF THE UTILIZATION OF ALL RESOURCES AT THE ENTIRE COMPANY

TPG CoReSuite is an entirely browser-based product for planning capacities and resources. The tool enables you to plan your organization's entire workload and thus helps you respond flexibly in a dynamic environment. The tool provides you with an overview of the workload of existing team members (= resources) and a comparison with the available capacities. By testing scenarios, you will find the optimal resource utilization. This will enable you to better achieve your strategic corporate objectives.

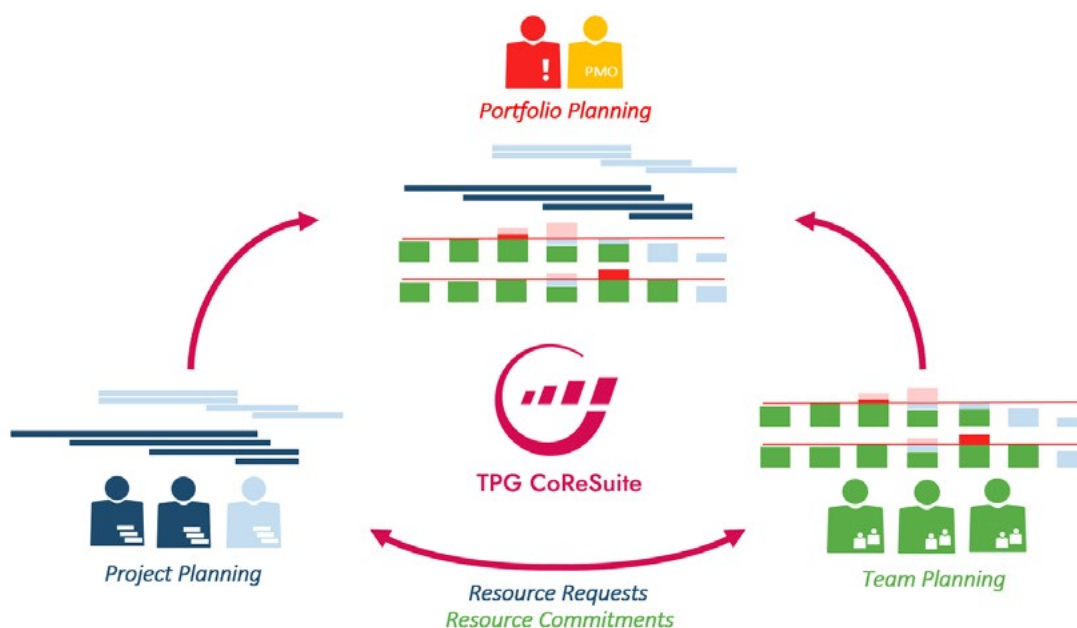
For capacity and resource planning, TPG CoReSuite provides three apps for working in the areas of project management, team management and portfolio management. You can operate these in the Microsoft Cloud or locally in your environment.

TPG The Project Group (TPG) is a company of project management experts that has been operating internationally for over 25 years. We focus on consulting for agile and traditional processes and methods, their implementation with suitable solutions as well as the integration of PPM solutions with ERP, work management, CRM and other enterprise systems. As a Microsoft specialist, we support our customers with solutions both in their local infrastructure and in the cloud. With many offices in Europe, North America, in the Middle East and Africa plus an international network of authorized TPG partners, we provide support for all sizes of companies from all industries.

MANY ADVANTAGES THANKS TO A SHARED DATABASE

The interaction of the roles and their tools in TPG CoReSuite provides your corporate management with a valuable view of the degree of resource utilization. This enables them to identify overload and availabilities and optimize the project portfolio and the utilization.

The product uses a shared database for easy data exchange between the individual TPG CoReSuite apps. Through bidirectional synchronization of data from third party systems via the TPG PSLink middleware, data can be exchanged, e.g., from Project Online, Microsoft Project Server, Jira, DevOps, SAP, etc. Easy handling and consistent availability of planning data ensure a high level of acceptance of the product among all those working with it.



Valuable and up-to-date resource information for informed decisions in management

Compatibility

TPG CoReSuite requires the Microsoft Cloud with Azure Web and SQL Services, and, when used locally, Windows Server 2016 or higher with MS SQL Server 2016 or higher.



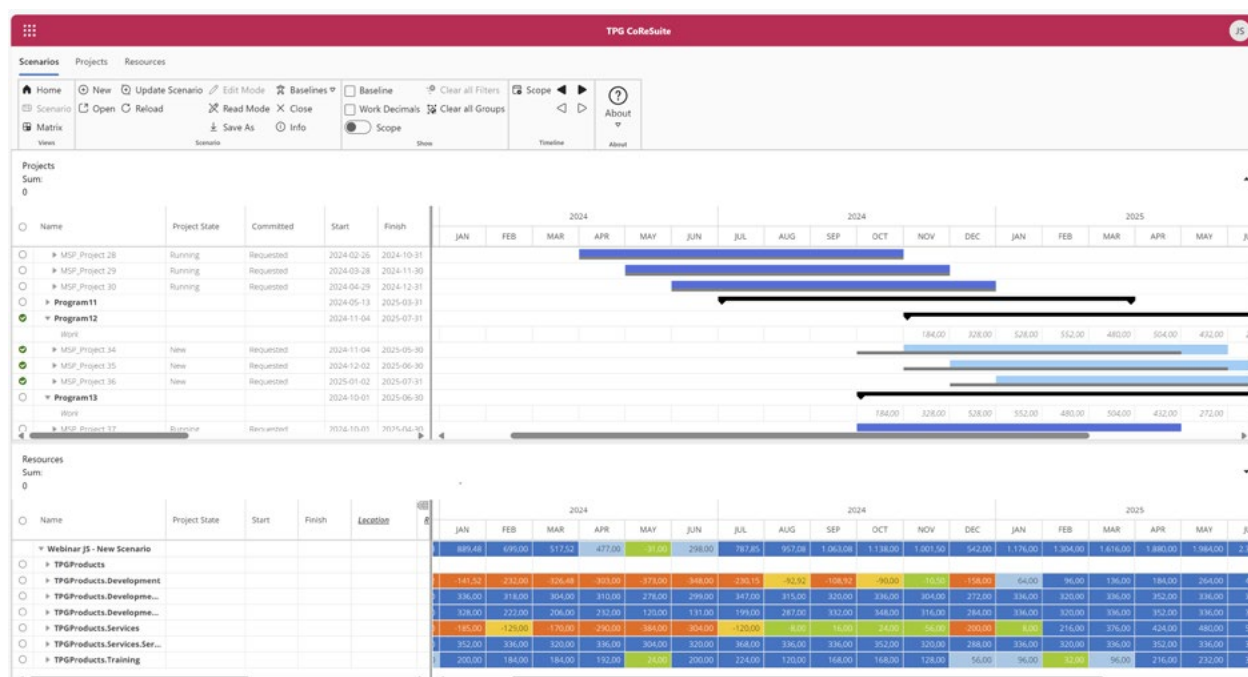
YOUR BENEFITS

- » All departments work with the tools that are suitable for them
- » Upload of all resource plan data from departments to one shared system
- » Complete overview of resource utilization and availability for projects
- » Differentiation between operations, absences and resulting project availability
- » Simple table-based project planning in time phases, like in Excel
- » Graphical simulation for portfolio optimization according to resource availability

TPG CoReSuite – Portfolio Manager App

TPG CoReSuite allows portfolio managers and the PMO to optimize resource utilization with scenarios throughout the company. For this, all project managers' and team leaders' plans are added up and compared to the capacity. You can group resources according to any criteria, for example abilities / skills, and aggregate their capacities.

In this way, you can identify and resolve resource conflicts before projects are started. To achieve this, you can easily move or deactivate projects and adjust capacities as part of what-if scenarios.



Collaboration with the Project Manager

Before projects can start, it is necessary to verify the availability of resources. To ensure you do not have to plan all the details at the beginning of the project, TPG CoReSuite supports you with the option for rough planning. You can do this at project or phase level and not necessarily in detail at task level. In addition, you can keep your planning simple by using generic resources first. Later, you can expand the initial quarterly or monthly planning to the detailed weekly planning – including the allocation of the people assigned from the teams.

Collaboration with the Team Manager

TPG CoReSuite also provides absences and operations in addition to resource planning from the projects as a basis for realistic utilization planning. Therefore, it does not only map the capacity but also the actual availability for projects. This enables you to plan your teams and their resources soundly and with a long-term view. For projects, you can choose between adding the project manager's resource planning or the team leader's commitments to the portfolio.

